

Moving BidMagic to a new system

(Backup / Restore Utility)

Moving BidMagic information from one machine to another is easy; it can be done in a few steps.

1. First backup the “old” system
2. Copy the backed up data onto a USB stick or suitable drive.
3. Go to the “new” system and then restore the information.

This will transfer both client and product information with momentary downtime.

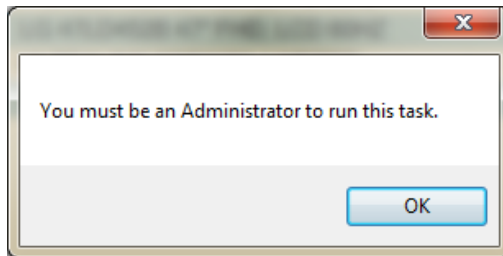
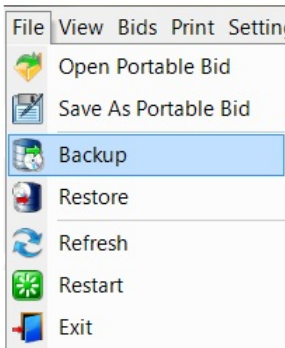
- **Backup Utility**

There are two methods for backup and restore your BidMagic data, Basic and Advanced. The Basic method will work on 95% of the systems out there; the other 5% is designated for more complex systems.

To initiate a backup, the simplest method is from inside BidMagic.

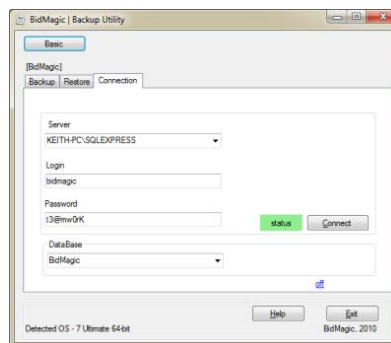
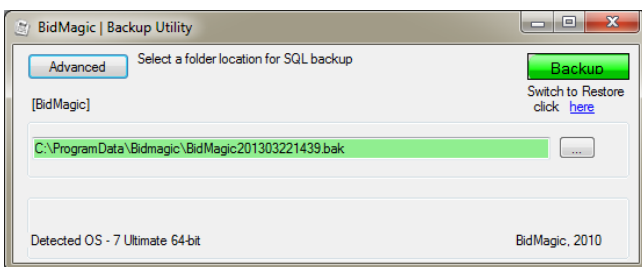
Go to the **File tab** and select **Backup** (version 8 depicted).

It will inform you that you must be an Administrator on the computer to perform the Backup task. Press **OK**.



It will now open up the Backup utility, either in Basic or Advanced mode.

- **Basic Method**



The fields should auto-populate, Server name, Login, Password and Database name.

The server name should reflect the name of the system where SQL Server is install and running.

In this example, it is running on a system called KEITH-PC. The SQL Server instance is: KEITH-PC\SQLEXPRESS.

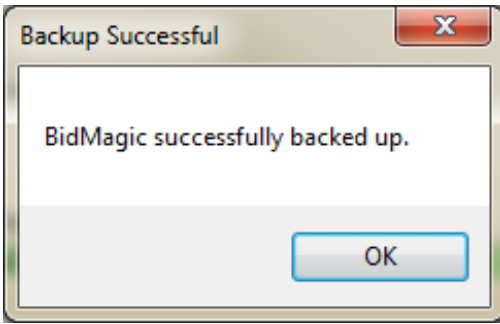
The Backup Utility using the Basic method was designed for ease of use.

The default backup file path is indicated; here it is:

C:\ProgramData\BidMagic\ *[the BidMagic file and date inserted here].bak*

Press **Backup** and the BidMagic data (customer & product) will be backed up.

The Backup utility will inform you of a successful backup.



The **Advanced method** will require some more steps, but it allows for more options as well.

- **Advanced Method**

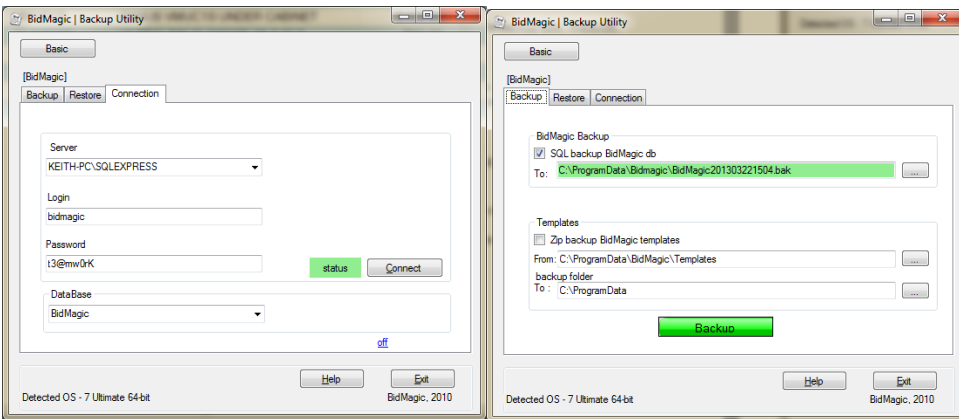
The advanced method lists the server name it connects to and it allows you to back-up your templates.

Assuming the Server name is correct press the **Connect** button.

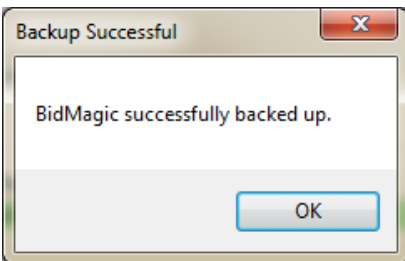
If the database name to SQL Server is correct, the status will be highlighted in green, if not correct, it will be yellow.

Then go to the **Backup** tab.

As in the previous method, it will back-up the data to a default location, please do not change this.



As in the other method, the utility will inform you of a successful backup.

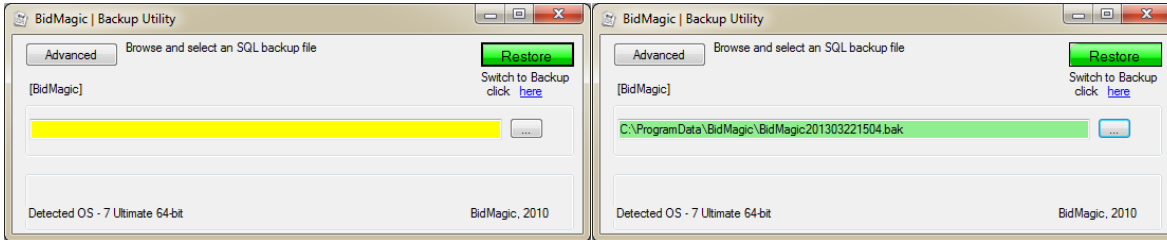


- **Restore Utility**

As with the Backup, the Restore utility also has two methods, Basic and Advanced.

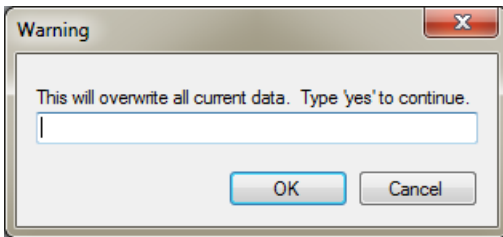
- **Basic Method**

When you first select Restore, the database the location to be restored from will be blank and have a yellow highlighted field because no information has been selected yet.

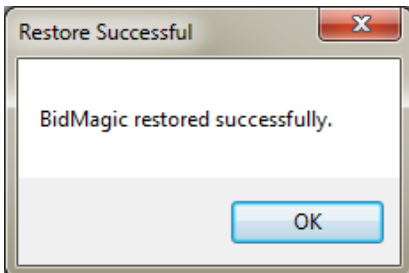


Use the browse button to search for the file you just backed up. If it is a valid backed up file the highlight will turn green.

Select the **green restore button** and the confirmation window will appear, type **yes** in the box and then **OK**.

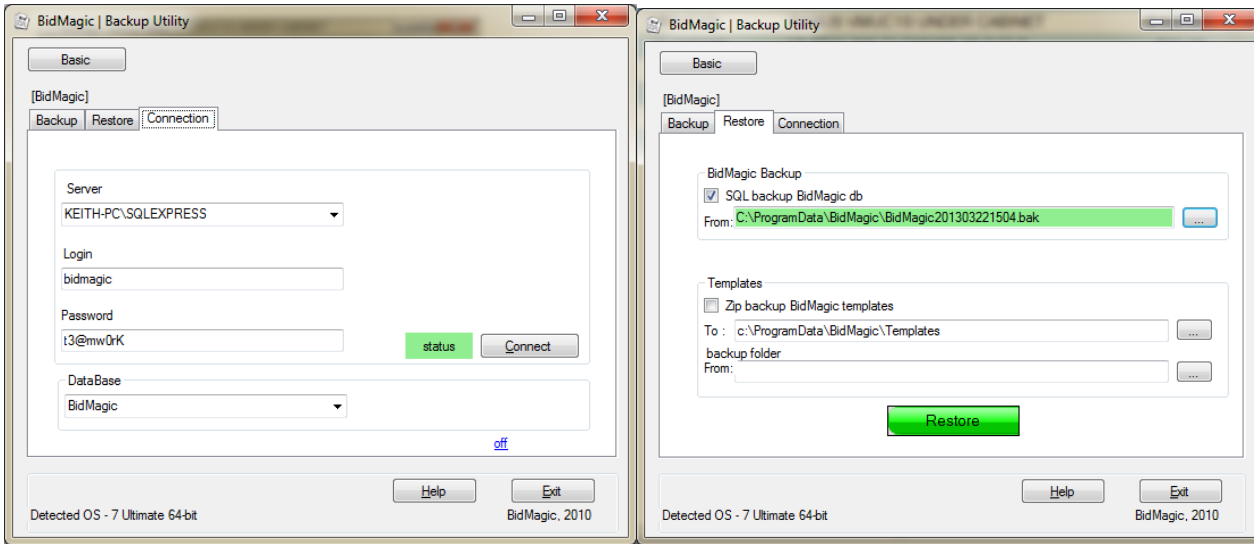


As with the backup utility, the restore utility will give you a confirmation of a successful restoration of data.

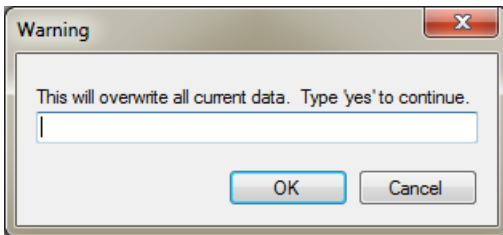


- **Advanced Method**

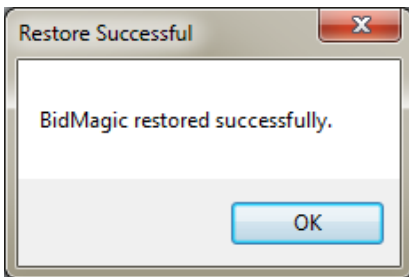
The advanced Method operates the same way with one major exception; you must confirm the Connection path and then go to the restore tab to activate the utility.



Select the **green restore button** and the confirmation window will appear, type **yes** in the box and then **OK**.



As with the backup utility, the restore utility will give you a confirmation of a successful restoration of data.



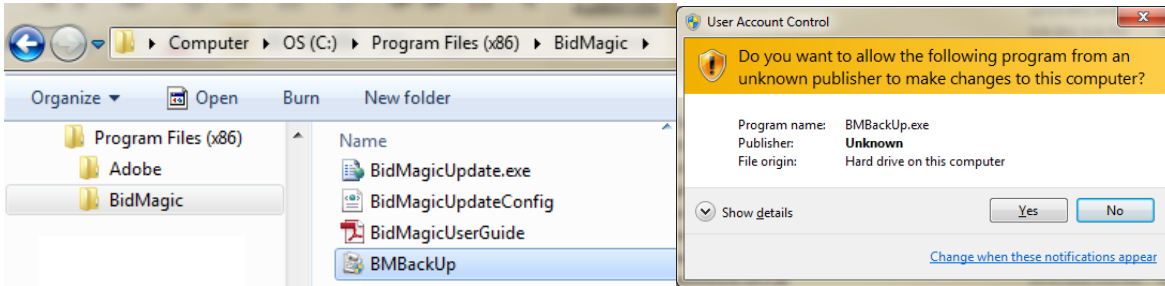
- **Addendum**

There are times when you may receive the message of the database is in use and the Restore process is halted because the database is in use. This is an exception.

The way to complete the Restore process is to close BidMagic and Run the Restore utility directly from the BidMagic folder inside the program files folder.

If you have a 64 bit operating system, you will find the BidMagic folder in program files(x86).

Please **right-click** on BMBackUp and select run as administrator. It will open up the executable bmbbackup utility.



It will now open up the Backup / Restore utility.

