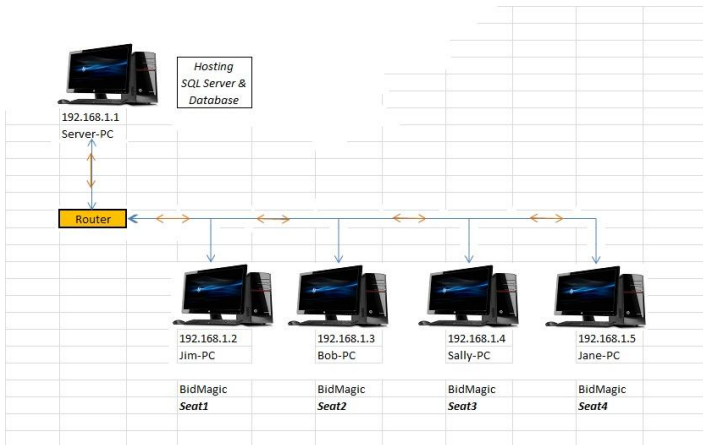


The network connection between BidMagic and SQL Server is easy to setup.

The standard “out of the box” installation, BidMagic is assuming the database is being run (hosted) on the local computer.

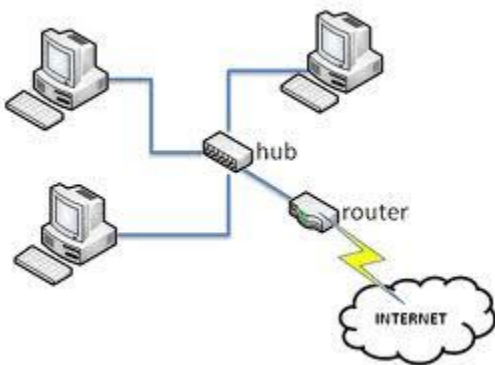
Let’s assume for a minute that you have a computer dedicated to being a file server, that machine would house (host) SQL Server and run the database and the “client” machines would then be able to share the same information forward and backwards.



This is considered a true server to client relationship.

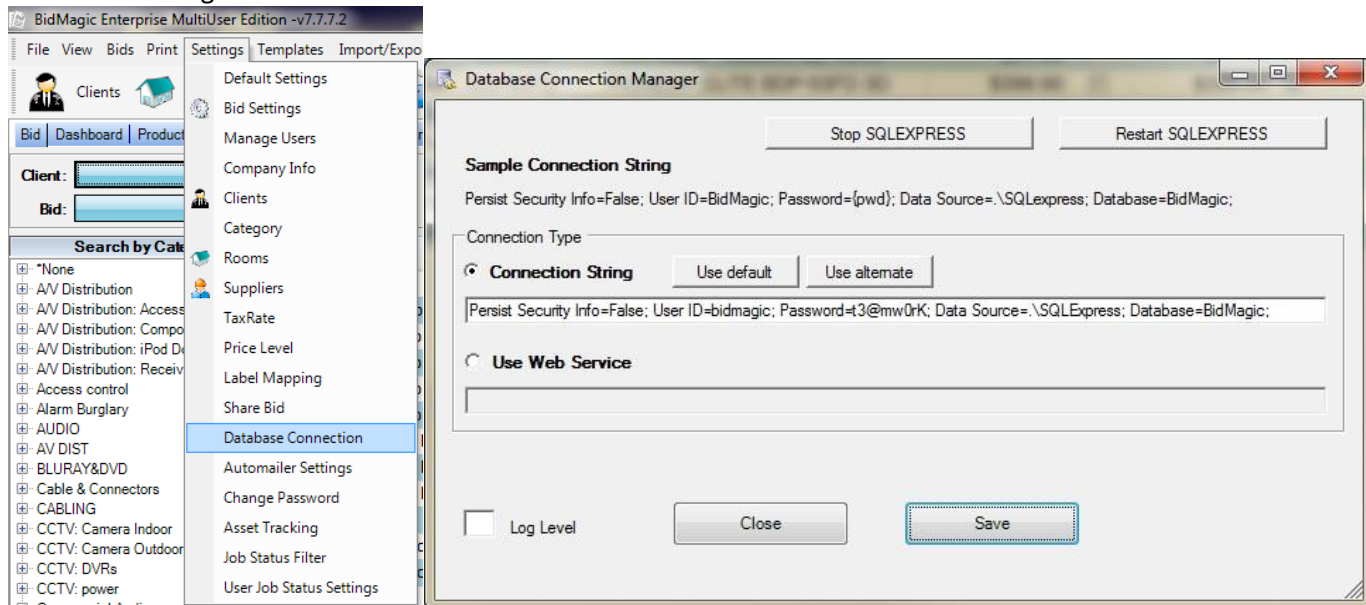
The other method is to have what is known as a Peer-to-Peer network.

Essentially one computer would act as the Server (hosting the database) and the other machines would share access of the info.

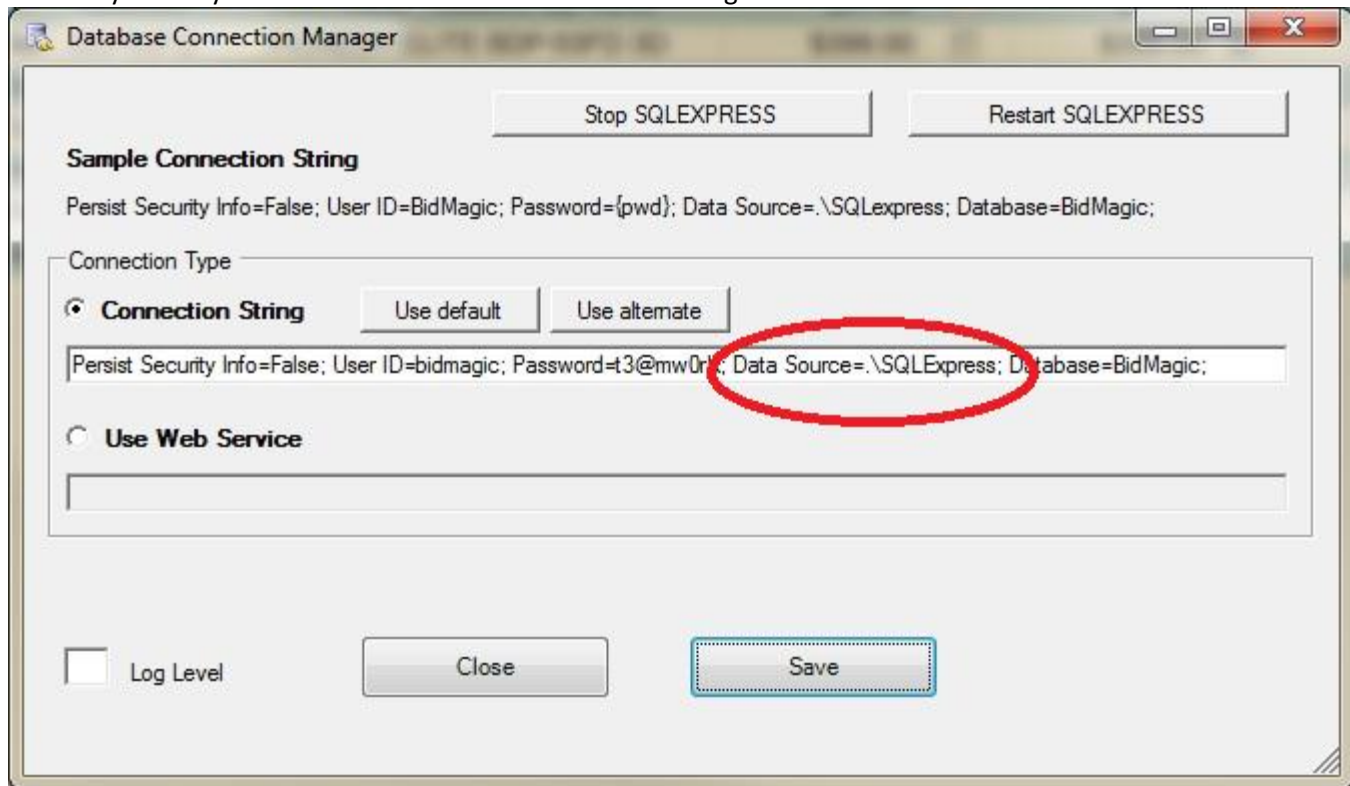


To change your BidMagic seat from looking at the local computer for its database to looking to the “Server” for the information, the Database connection string needs to be modified from the database connection manager inside BidMagic.

Select the settings tab > database connection

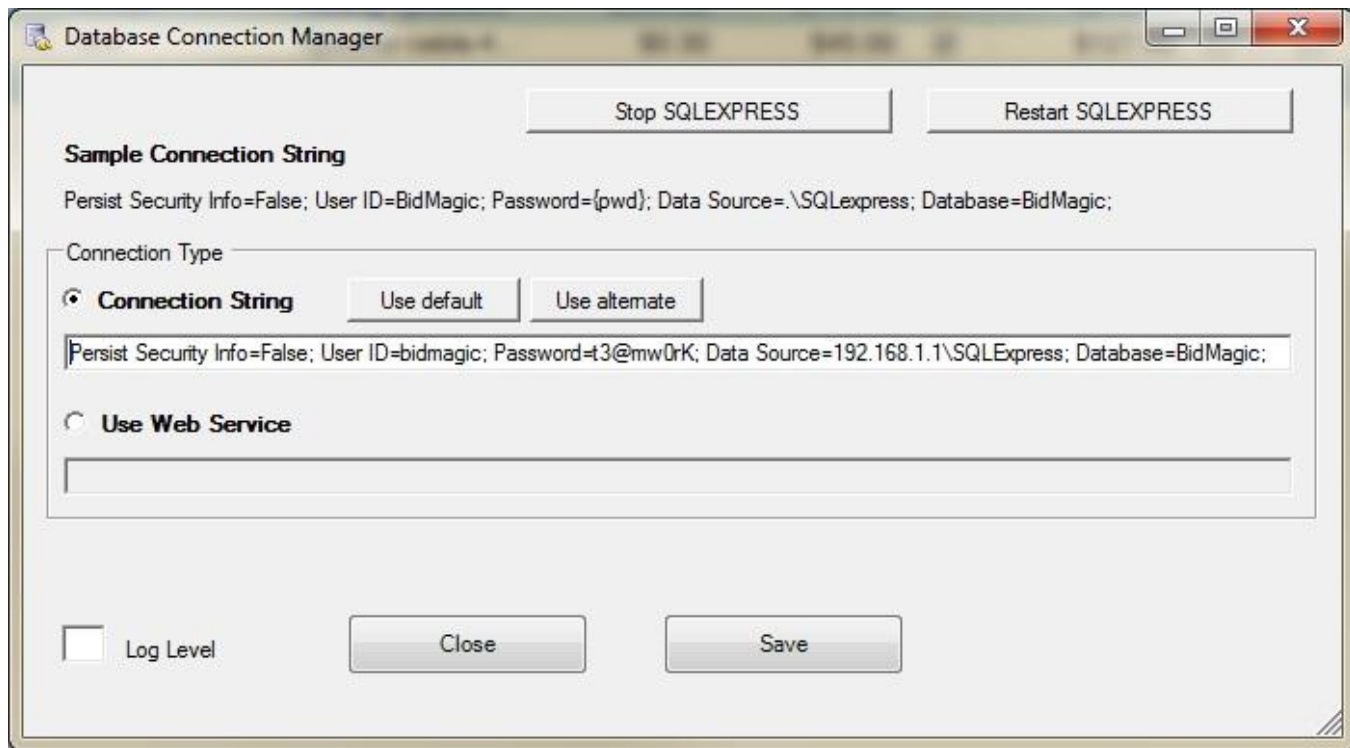


The entry that says Data Source is what will need to be changed.



The name of the server will need to be changed from Data Source=.\SQLEXPRESS, to the name of the server, which happens to be Server-PC or the IP number of the machine (192.168.1.1) in this example.

Data Source=192.168.1.1\SQLEXPRESS



The above connection string will allow a mobile system to connect to your database via a **VPN Connection**.