

# How to Install BidMagic on multiple PC's

## Follow these steps to install on the first (main) PC:

Download the latest version of BidMagic from our Tech Support Page

<https://bidmagic.com/tech-support/> and install it on your main PC. This will also install SQL Express on that PC which is the database PC's running BidMagic will need to connect to.

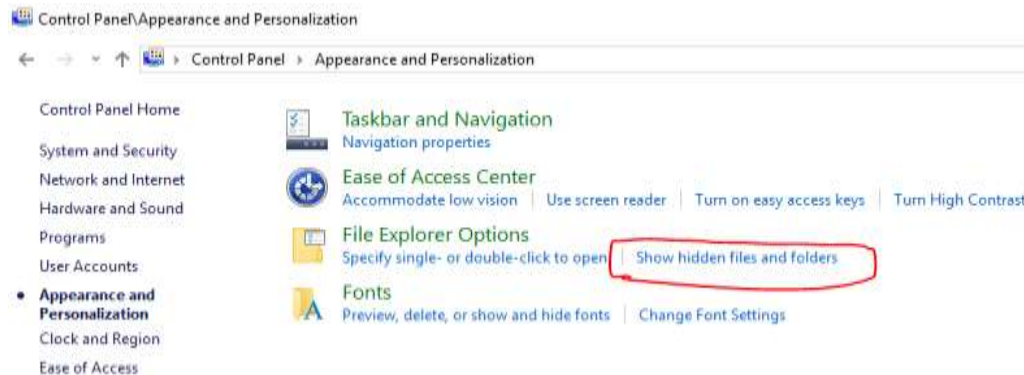
Run BidMagic on that PC and register your copy to make sure you have the features needed. Please watch the video tutorials for help getting started.

## Do not use this same installer for Additional PC's:

## It will take too much time and will add SQL that you do not need.

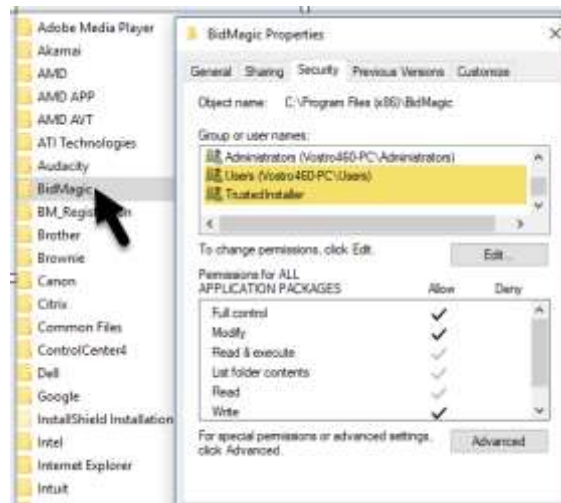
On the First PC, open Windows File Explorer and Locate C:\Program Files (x86) BidMagic. Connect a USB drive and right click on it to create a new folder named Files. Paste the BidMagic folder there.

Then locate C:\ProgramData/BidMagic. Note: If you do not see the Program Data, folder, open control panel, click Appearances and Personalization. Then under File Explorer options, click on Show hidden Folders.



Reopen File Explorer and you should now see the Program Data Folder. Right click to create a new folder on the USB drive named Data. Copy and Paste the BidMagic folder there on your USB drive.

Eject the USB drive and move it to the New PC. Paste each BidMagic folder to the exact same folder where it was on the first PC. **Be sure to paste both folders.**



On your new PC, Inside C:\Program Files (x86)\BidMagic right click on BidMagic.exe – application and select send to Desktop shortcut. Then navigate to the C:\Program Data\BidMagic folder and right click on it to make sure it is not read only and that users and trusted installers have full rights. Click on edit button to add rights.

Now, Right click Program Files (x86) BidMagic folder, select properties. Make sure Read Only is not selected. If so, uncheck that and apply. Then click on the security tab and make sure that Users and Trusted Installers have full right to the folder.

Congratulations, you are now done.

Click on the BidMagic desktop shortcut to launch it.

Repeat this process for additional PC's. (Register each PC to activate your features)

If your PC's are on the same network, they can share data from the first PC. Additional network configuration, file sharing, firewall and connectivity may require additional support.